

Herschel iQ Heating Controls

R2 wireless receiver for T2 thermostat

Installation and operating instructions



Technical Information

Power supply:	Mains 120-240V Maximum current 10 Amps.
Installation:	Wall or ceiling-mounted
Accuracy:	+/- 0.5 °C
Ambient temperature limits:	0 - 50 °C
Maximum relative humidity:	85%
Protection Class:	IP20
Housing:	ARC+PC
Wireless:	433Mhz (RF) and 2.4GHz (Wifi)
Wireless Range:	35m
Warranty:	2 years
Certifications:	CE, RoHS, EMC, RED, LOT20

The product complies with European Safety Standards Low Voltage Directive 2014/35/EC, EMC Directive 2014/30/EC, RED Directive 2014/53/EC, RoHS 2011/65/EC & Ecodesign requirements for local space heaters 2009/125/EC.

Original instructions covering Herschel iQ controllers produced from 08/2020 onwards



R2 Wireless receiver for T2 thermostat

The Herschel iQ T2 Thermostat & R2 receiver are designed to regulate Herschel Infrared Heaters and incorporate the latest energy-saving features. These include Herschel's open window technology and an adaptive start function ensuring your room is always at the right temperature with the least energy use. When used with wifi you can also regulate your heating remotely using the SmartLife App. SmartLife also allows you to control the system by voice using Alexa or Google Assistant.

The R2 is the switch that turns your heaters on and off and must be wired to the heaters and mains power. It also acts as the internet gateway for the T2, enabling you to control the system with the SmartLife App.

Each R2 can handle up to 10 amps, so you will need sufficient R2 units to control the overall heating load. If you are in any doubt regarding calculation of heating loads, please consult a qualified electrician. Each R2 must be paired to a T2 to operate correctly. Pairing steps can be found in the instructions for the T2. On its own, the R2 provides only a limited Boost function and has no temperature control capability.

The R2 is rated IP20 and must be installed outside of the splash zones in bathrooms.

Please read these instructions carefully and keep in a safe place.

2 Year Warranty



Register your product at <https://www.herschel-infrared.com/customer-service/warranty-registration/> or via the QR code.

Within two years from date of purchase Herschel will repair or replace the R2 where the fault is due to defects in materials or workmanship. This warranty is for standard domestic use only and excludes commercial uses. In the event of a warranty claim please visit the Customer Service area of the Herschel Website and follow the Warranty Claim process. You will need proof of purchase.

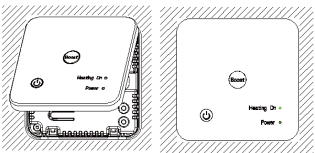
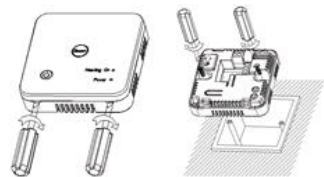
A prerequisite for validity of the warranty is use at the specified supply voltage of the thermostat and use in accordance with the conditions specified in this manual. Any further warranty or claims are excluded. The warranty covers the repair or replacement of the defective product only and Herschel shall have no liability for installation costs or consequential losses however incurred. The decision to repair or replace will rest solely with Herschel and any replacement will be as close as possible in specification to the failed unit. Removing the serial number will void the warranty. The warranty will also be void if the unit has been tampered with in any way. The product rating label must be left on the unit. Herschel Infrared Ltd will assume no responsibility for scratches on the thermostat display or case after first use.

Note your serial number here for future reference.

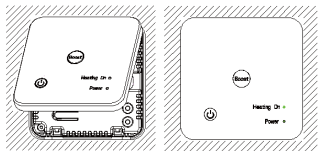
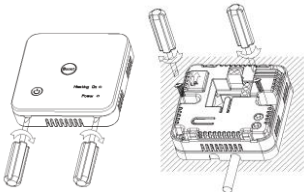
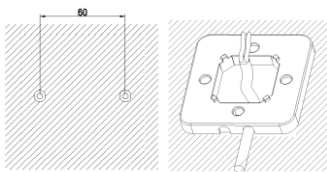
Installation

The Herschel IQ R2 can be installed by competent DIY persons but if in any doubt please consult a suitably qualified electrician or Herschel Accredited Installer. The R2 must be used in conjunction with a fused spur. The unit must not be used as a fused spur itself.

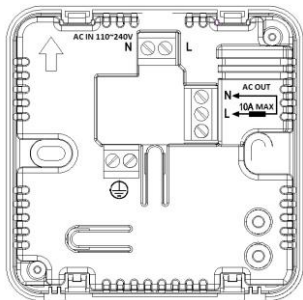
Mounting onto a recessed box:



Mounting onto a wall surface:



Wiring



Connect the live and neutral AC mains (marked AC IN 110-240v). This feed should come from the fused spur.

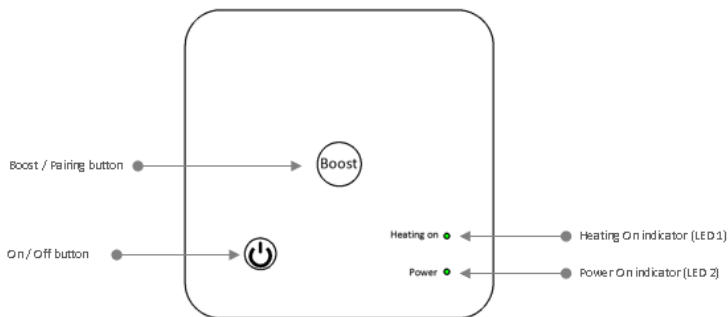
Remove the mains plug (if fitted) from the Herschel heater and connect to the terminals marked AC OUT 10A MAX.

Insert the earth wire from the mains and the earth wire from the heater into the terminal marked



IMPORTANT

Maximum load is 10A / 2.3kw at 230v. The R2 can be used to control several Herschel panel heaters but the maximum wattage of 2.3kw (2,300w) must not be exceeded. Do not use for any other non-Herschel heating devices. INDOOR USE ONLY.

R2 Buttons & Function

Pressing the BOOST button once with the power on will turn on the heating for 15 minutes regardless of T2 or App temperature settings. Pressing BOOST twice will turn it on for 30 minutes; three presses for 45 minutes and four presses for 1 hour.

Failsafe Mode

If the R2 loses connection with the wifi, it is still controllable locally via the T2. (The Red LED 1 will flash slowly while the wifi signal is lost).

If the R2 loses connection with the T2 it remains in the last setting it was placed in by the T2. (The Red LED 1 will flash slowly while the RF signal is lost).